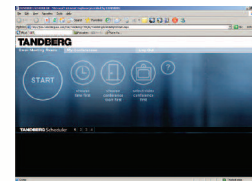
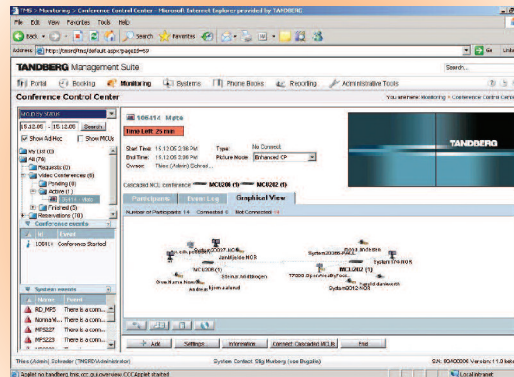
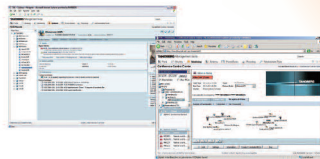




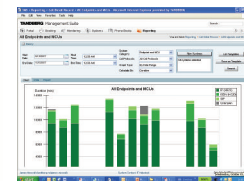
Systems Management



Scheduling



Monitoring & Notification



Reporting

TANDBERG Management Suite

One management platform for all your visual communication needs. TANDBERG Management Suite (TMS) provides complete visibility and control for on-site and remote video networks. It's scalable, easy-to-use, and integrates with existing applications and third party vendors to increase ROI.

The optional TANDBERG Management Server provides an all-in-one solution for quick and easy deployment for small- to mid-size installations.



TMS Server

MANAGEMENT

- Manages on-site and remote video systems, including statistics, directories, booking and software updates
- Intuitive web-based interface
- Supports management of network and video equipment from multiple vendors
- Manages calls made on multiple protocols (IP using H.323 and SIP, ISDN, V.35 and mixed calls)
- Manages endpoints, MCUs, gatekeepers and gateways directly
- Supports multiple servers for improved uptime
- Supports automatic creation of phone books, including Active Directory and H.350

MONITORING/NOTIFICATION

- Detailed system-by-system and conference-by-conference records
- Intelligent diagnostics for rapid support response
- System Summary Page for fast access to most-used information
- Consolidated list of open tickets with links to recommended fixes
- Integrated Network Monitoring Support — Integrates with HP OpenView, IBM Tivoli®, NetCool® and any SNMP network monitoring tool

SCHEDULING

- Scheduling or ad-hoc calling for video, audio, Web and data conferences
- Ability to schedule conferences, book rooms and invite participants using Microsoft Outlook® or IBM Lotus Notes® *

COLLABORATION

- Supports Microsoft® Office Communicator*
- Supports IBM Lotus Sametime® Connect*

OPTIONS

- TANDBERG Management Suite is available as a software package for large-scale deployment.
- TANDBERG Management Suite is also available in a pre-installed server. It's ideal for small to medium organizations who require an out of the box solution that is easy to install and configure.

* requires software option

TANDBERG EXPERTS SUPPORT TMS DEPLOYMENT AND TRAINING. GET THE MOST FROM YOUR INVESTMENT WITH PROFESSIONAL SERVICES. VISIT WWW.TANDBERG.COM

MANAGEMENT

CONFERENCE CONTROL CENTER

Complete conference overview on one screen
Conference and participant connection control
Conference-by-conference and system-by-system information
SYSTEM UPGRADES

Pre-scheduled or ad-hoc software updates
Release key import and export

SYSTEM CONTROL

Phonebook access
Monitoring and reporting
Software upgrades
Initiate, extend and terminate conferences
Change video layouts
Volume control and audio mute/unmute
Microphone on/off
Edit local phone books
Send messages to systems
Detect illegal system configurations

REMOTE SYSTEM SUPPORT

Phone book access
Software Upgrades
Statistics

LANGUAGE

English, Simplified Chinese and Japanese
Supports over 15 languages for booking and scheduling

INTELLIGENT TICKET HANDLING

Automated ticket handling (open/close)
Ticket priority customization
Proactive system check-up prior to engaging scheduled meetings
Intelligent Trouble Ticketing Handling
Diagnostic messages and solution suggestions
System status, gatekeeper status, SNMP configuration, ISDN/IP configuration and information

INTEGRATED NETWORK MONITORING SUPPORT

Integrates with HP OpenView, IBM Tivoli®, NetCool® and any SNMP network monitoring tool

PHONE BOOK SERVICES

Corporate Directory allows multiple phone books and folders, browsing and searching from the endpoint
Supports server based TANDBERG, Polycom phone books, and H.350 white pages
Centrally-managed server phone books
Creation of one or multiple phone books
Search unlimited entries
Automatic directory import from gatekeeper, ILS and LDAP (single or multiple source)
Supports over 10 methods of automatic creation of phone books, including Active Directory and H.350
Create, edit, import and export phone books
Automatic application of national and international dialing rules
Automatic identification of ISDN/IP numbers
Automatic insertion of gateway (GW) prefix, area codes and country codes

ACCOUNT MANAGEMENT, SECURITY AND PERMISSIONS

FTP audit log from TANDBERG endpoints and MCUs
Flexibility to limit access to TMS features and limit access to endpoints
Definition and management of user profiles
Multiple security permissions
Single sign-on authentication of users using Windows® authentication

TEMPLATES/PROVISIONING

Customized template creation, management and distribution to systems
Selectable audio, video, network and bandwidth settings
Mass Deployment with automatic configuration from TMS
Ability to create persistent setting templates that can be proactively enforced on systems

BACKUP

Capability to perform daily configuration restores, ensuring systems begin the day with the proper configuration
Backup system settings
Restore lost settings

MONITORING

GRAPHICAL MONITORING

Map monitor with graphic display
Customizable background images
Graphical display of call and system status

EVENT NOTIFICATION

Event Notification can be integrated into any SNMP Network Management system (e.g., HP Openview and IBM Tivoli)
E-mail notification to individuals or groups
Event logging including boot, link down/up, connect error, call connected/ disconnected, lost response/got response, Downsampling, upgrade start/finish scheduling, gatekeeper registration, low battery, wrong password alert

BILLING INFORMATION

Flexibility to use billing and account codes
Full Call Detail Records including Billing or Account codes for cost analysis or accounting

CALL DETAIL RECORDS (CDR) AND STATISTICS

Supports CDR capturing from Endpoints, MCUs, Gatekeepers and Gateways
Call detail records on screen or in native Excel format
Graphical display of call detail data
Support for multiple reporting formats: Onscreen, PDF or HTML
Number of incoming and outgoing calls
ROI Calculator
Call date and duration
Bandwidth usage
Network type
Number/address called
Statistics in data, graph and chart format
Number of scheduled conferences per session
Network, gatekeeper and ISDN inter face
Authentication failure
Error statistics
Battery status

CALL ROUTING

Ability to support Best Impression Cascading and Least Cost Cascading
Automatic call routing on IP and ISDN
Least cost call routing on IP and ISDN
Automatic MCU, gateway and network selection
Supports MCU cascading, V.35, SIP, H.323, and H.320

SCHEDULING AND BOOKING *

SYSTEM BOOKING

Book system and meeting room simultaneously
Book recurring meetings and video resources
Create, password protect, edit or delete booked conferences
Add web or data conference to meetings
Add/remove participants from reservation or connect/disconnect participants during conferences
Connect conferences ad-hoc or pre-schedule connection
Reserve resources for dial-in participants (telephone or video on ISDN or IP v.4 or IP v.6)
Schedule point-to-point conferences or bridged meetings
Lock conference, preventing new participants from joining
Invite participants by e-mail
Customize meeting names

SCHEDULE OVERVIEW

Overview of scheduled meetings, resources and participants
Real-time over view of meeting status

WEB AND DATA CONFERENCING

Integrated scheduling of WebEx conferences with video system booking
Create a data conference for participants to share applications and edit documents (Supports WebEx, Microsoft Live Meeting and TANDBERG See & Share)
An e-mail invitation is generated, enabling conference participants to link to the Web conference

INTEGRATION WITH MICROSOFT

EXCHANGE SERVER

Ability to schedule conferences, book rooms and invite participants using Microsoft Outlook
Requires Microsoft Exchange Server 2000 or 2003

OFFICE COMMUNICATOR

Ability to launch ad-hoc and multipoint calls via Office Communicator
Requires Microsoft Live Communications Server 2005

INTEGRATION WITH IBM LOTUS DOMINO® SERVER

Ability to schedule conferences, book rooms and invite participants using IBM Lotus Notes and Lotus Sametime
Requires IBM Lotus Domino Server V6.x running on Microsoft Windows®

REDUNDANCY SUPPORT

Application Redundancy
Database Clustering

REQUIREMENTS

TMS SERVER (MINIMUM REQUIREMENTS)

1 GB RAM
Pentium 2 Ghz or higher Pentium compatible CPU
Microsoft Windows 2000 or 2003 Server running the latest Service Packs with Internet Information Services

TMS CLIENT REQUIREMENTS

Internet Explorer 5.5 and above or Firefox browser 1.5 or higher

SEE&SHARE SERVER REQUIREMENTS (IF INSTALLING SEE&SHARE OPTION)

Pentium I 500 MHz
Microsoft Windows 2000, 2003 or XP operating system
256 MB RAM
20 MB of available disk space for services
SEE&SHARE CLIENT REQUIREMENTS
Internet Explorer 5.5 or higher

SOFTWARE OPTIONS

Microsoft Office Communicator Package
Microsoft Exchange Package
IBM Lotus Sametime Package
IBM Lotus Domino Package
3rd party booking API for customized integration
Network Integration Package (supports Cisco® IP/VC 3540, Polycom® MGC (Accord) MCU, RADVISION vialP MCU and others)

**TMS includes TANDBERG Scheduler*

All specifications subject to change without notice, system specifics may vary.

All images in these materials are for representational purposes only, actual products may differ.

TANDBERG is a registered trademark or trademark of TANDBERG in the U.S. and other countries.

All other trademarks are property of their respective owners.

TANDBERG MANAGEMENT SERVER

PROCESSOR & MEMORY

Intel® Pentium® 4 LGA775 CPU (Max. Intel® Pentium® 4 LGA775 CPU (Max. 3.6GHz with 800MHz FSB and 1MB Cache)
240-pin DIMM x 2, support Max. 2GB DDRII 400/533 memory

BIOS

Award System BIOS
Support Console redirection
Support Power on after power fail as the BIOS option
By-pass enable/disable as the BIOS option

PCI EXPANSION

On-board 32bit/33MHz Mini PCI Socket x1 (Master)

STORAGE

IDE 3.5"HDD x 1 (Stand Type) or IDE 3.5"HDD x 2 (Slim Type)
SATA 3.5"HDD x1 (Stand Type) or SATA 3.5"HDD x2 (Slim Type)
On-board Compact Flash Socket (Primary Channel)

COOLING SYSTEM

On-board 40 x 40 mm fan x 2
System 40 x 40 mm fan x 2 at Rear

ETHERNET

Marvell 8053 x 4 (PCI Express x 1); & #28; Copper (Base T, RJ45 with LED) GbE port x 4 (1, 2, 3, 4) & #28; LAN 1 & 2 support by-pass function

SYSTEM CONTROL AND INDICATOR

Power LED x 1 at Front
HDD Active LED x 1 at Front
AT Power Switch x 1 at Rear

SYSTEM I/O INTERFACE

COM port x 2 (Front x 1, Rear x 1)
USB 2.0 port x 4 (Front x 2, Rear x 2)
GPIO : 4 in 4 out
Optional 16 x 2 characters LCD Module with keypad through PIO Interface

ENVIRONMENTAL DATA

Operating temperature:
0°C to 40°C (32°F to 104°F)
Relative humidity: 10% to 90%
Storage and space in transport temperature:
-20°C to 80°C (-4°F to 140°F) non-condensing

POWER

100-240VAC, 50-60Hz, 250W max

PHYSICAL DIMENSIONS

Height: 1.7" (44mm)
Width: 16.8" (426mm)
Depth: 16.4" (419mm)
19" rack-mountable, 1U height



TANDBERG

Management Suite

TANDBERG WORLD HEADQUARTERS
Philip Pedersens vei 20
1366 Lysaker, Norway
Tel: +47 67 125 125
Fax: +47 67 125 234
Video: +47 67 126 126
tandberg@tandberg.com

1212 Avenue of the Americas,
24th Floor
New York, NY USA 10036
Tel: +1 212 692 6500
Fax: +1 212 692 6501
Video: +1 212 692 6535
tandberg@tandberg.com

October 2007